

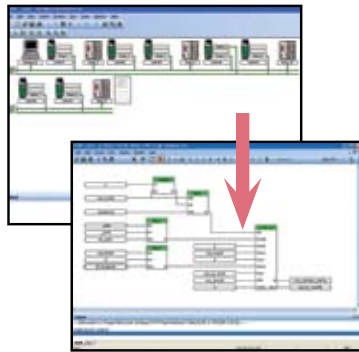
Software and Connectivity

Tools for Selection, Programming and Commissioning

Easy-to-use Software

While every AC and DC drive can be setup using the drive's keypad, Control Techniques free setup software can speed the configuration process. Our CTSize utility software enables users to effectively size servo drives and motors to an application, and CTSave lets users gauge their energy usage, savings and payback period.

The software tools to develop sophisticated applications include SyPTLite and SyPTPro, which comply with the IEC-61131-3 standard for ladder logic and function block programs; and "Motion Made Easy"™ servo software, PowerTools Pro.



SyPTPro, PowerTools Pro and Motion Perfect software, can all be used to program motion control on the Unidrive SP. Details on these software solutions are covered in the Motion Control section of this catalog. In this way Control Techniques provides users the option to choose the software tool best suited for their drive and motion application needs.



With the exception of SyPTPro, all Control Techniques software is free of charge, and is available for download from our web site, www.emersonct.com. SyPTLite is also available from the SyPTLite Users Group web site, www.syptlite.com.

Drive Commissioning Tools

		Page
CTSoft	Parameter Configuration for Commander SK, Commander GP20, Digitax ST-B, Digitax ST-I & Unidrive SP	344
SXSoft	Parameter Configuration for Commander SX Drives	344
MentorSoft	Parameter Configuration for Mentor II and Quantum III Drives	344
SL Parameter Tool	Parameter Configuration for Commander SL Drives	344
CTScope	Drive Diagnostic Tool for Plotting/Tracing Drive Parameters on Unidrive SP, Commander GP20, Commander SK, Mentor II, Quantum III and Digitax ST	346

Drive, Module, and Controller Programming Tools

		Page
PowerTools Pro	Advanced Motion Control Programming for Epsilon EP, FM-3 and FM-4 modules, and for Unidrive SP, Digitax ST-Z with the SM-EZMotion module	348
SyPTPro	Advanced Applications Programming for Unidrive SP and Digitax ST-P with SM-Applications Lite V2, SM-Lite Plus and Unidrive SP and Digitax ST-Z with SM-Applications Plus module	361
SyPTLite	Applications Programming for Commander SK with Logic Stick, and for Unidrive SP, Commander GP20 or Unidrive SP with SM-Applications Lite V2 module	369
MotionPerfect2	Motion Control Programming for the MC multi-axis controller	370

Drive Selection Tools

		Page
CTSize	Drive and Motor Selection Tool for Motion Control Applications	372
CTSave	Energy Savings Estimator	373

Connectivity Software Tools

		Page
CTOPC Server	Software for interfacing to SCADA and PC Based Control Systems	374