



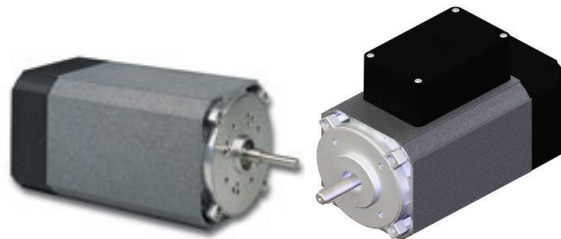
Groschopp Fractional HP AC Motors

230V AC Inverter Duty
Square Frame

Updated March 5, 2009

Standard Features

- + 230VAC, 3 Phase, 1.0 SF, 120Hz Constant HP Operation
- + TENV: 20:1 Constant Torque; TEFC: 5:1 Constant Torque
- + Face Mount (Optional Feet)
- + Holding Brakes & Encoders Available on NV Models
- + Low Profile Conduit Box (flying leads and cord/connector options)
- + UL; Aluminum Frame, Class "F" Insulation
- + 2 Year Warranty with Emerson CT Drive



Base RPM	HP	Power (Watts)	Torque (in-lb)	Enc	Frame	Shaft Diam	Cat No.	List Price	Amps	Dimensions (inches)	Weight (Lbs)
3400	0.050	37	0.9	TENV	6540	3/8"	CT5139-B2N	\$310	0.29	5.2 x 2.9 x 2.9	4.1
	0.061	46	1.1	TEFC	6540	3/8"	CT5138-B2N	\$310	0.40	6.2 X 2.9 x 2.9	4.2
	0.110	82	2	TENV	8040	3/8"	CT5270-B2N	\$321	0.38	5.3 X 3.6 x 3.6	6
	0.179	133	3.3	TENV	8060	3/8"	CT5271-B2N	\$349	0.56	6.1 X 3.6 x 3.6	7.5
	0.201	150	3.7	TEFC	8040	3/8"	CT5294-B2N	\$321	1.13	6.7 X 3.6 x 3.6	6
	0.301	224	5.6	TENV	9060	9/16"	CT6060-B2N	\$371	0.94	6.3 X 4 x 4	10
	0.311	232	5.8	TENV	10060	9/16"	CT6126-B2N	\$407	0.99	6.5 X 4.4 x 4.4	12
	0.338	252	6.3	TEFC	8060	3/8"	CT5297-B2N	\$349	1.56	7.5 X 3.6 x 3.6	7.5
	0.408	304	7.6	TENV	10080	9/16"	CT6128-B2N	\$416	1.2	7.3 X 4.4 x 4.4	14.5
	0.451	336	8.4	TEFC	9060	9/16"	CT6061-B2N	\$371	1.65	7.7 X 4 x 4	10
1700	0.534	398	9.9	TEFC	10060	9/16"	CT6127-B2N	\$407	2.48	8 X 4.4 x 4.4	12
	0.763	569	14.1	TEFC	10080	9/16"	CT6129-B2N	\$348	2.84	8.8 X 4.4 x 4.4	14.5
	0.014	11	0.5	TENV	6540	3/8"	CT5137-B2N	\$310	0.23	5.2 x 2.9 x 2.9	4.1
	0.018	14	0.7	TEFC	6540	3/8"	CT5136-B2N	\$310	0.29	6.2 X 2.9 x 2.9	4.2
	0.054	40	2	TENV	8040	3/8"	CT5266-B2N	\$321	0.34	5.3 X 3.6 x 3.6	6
	0.087	65	3.2	TEFC	8040	3/8"	CT5267-B2N	\$321	0.55	6.7 X 3.6 x 3.6	6
	0.105	78	3.9	TENV	8060	3/8"	CT5302-B2N	\$349	0.63	6.1 X 3.6 x 3.6	7.5
	0.149	111	5.5	TENV	9060	9/16"	CT6062-B2N	\$371	0.78	6.3 X 4 x 4	10
	0.163	122	6	TEFC	8060	3/8"	CT5303-B2N	\$349	1.03	7.5 X 3.6 x 3.6	7.5
	0.181	135	6.7	TENV	10060	9/16"	CT6116-B2N	\$407	0.88	6.5 X 4.4 x 4.4	12
0.221	165	8.2	TENV	10800	9/16"	CT6117-B2N	\$416	0.98	7.3 X 4.4 x 4.4	14.5	
0.235	175	8.7	TEFC	9060	9/16"	CT6063-B2N	\$371	1.32	7.7 X 4 x 4	10	
0.284	212	10.5	TEFC	10060	9/16"	CT6124-B2N	\$407	1.55	8 X 4.4 x 4.4	12	
0.424	316	15.7	TEFC	10080	9/16"	CT6125-B2N	\$416	2.42	8.8 X 4.4 x 4.4	14.5	

Encoder Cables (Optional)

Description	Length		VA Disc.
	(Ft)	Order Code	List Price
Cable prewired with M12 encoder mating connector for EPC-260 encoder. DB15 at drive end for direct connection to SP drives.	15	VUFCS-015	\$130
	25	VUFCS-025	\$150
	50	VUFCS-050	\$200
	75	VUFCS-075	\$250
	100	VUFCS-100	\$300
Cable prewired with M12 encoder mating connector for EPC-260 encoder. Flying Leads at drive end for running through conduit and termination on SM-ETC.	15	VUFOS-015	\$130
	25	VUFOS-025	\$150
	50	VUFOS-050	\$200
	75	VUFOS-075	\$250
	100	VUFOS-100	\$300

VA Discount on Cables Only

Connectorized Power Cables (Optional)

Description	Length		VA Disc.
	(Ft)	Order Code	List Price
Connectorized Power Cable for Groschopp Motor, Motor Connector to Flying Leads, 6 Ft	6	VGMD5-006	\$50
	15	VGMD5-015	\$75
	25	VGMD5-025	\$110
	30	VGMD5-030	\$130

VA Discount on Cables Only

Catalog Order String



CT5139 - X X X XX XX XX		CT List	
	Blank	IP44 (standard)	\$0
	P6	IP66 Rating	\$100
	Blank	No Brake (standard)	\$0
	H1	Holding Brake; 5 in-lb **	\$400
	H2	Holding Brake; 15 in-lb **	\$400
	Blank	None (standard)	\$0
	E1	Encoder (SK) **	
	E2	Encoder (SP)	\$450
	N	Footless (standard)	\$0
	F	Feet ***	\$60
	2	2 Year Warranty when used with Emerson Drive	\$0
	1	1 Year Warranty when used with drive by 'Others'	\$0
	B	Conduit Box (standard)	\$0
	L	Flying Leads	\$0
	C	Connectorized (power leads) (Woodhead Connector)	\$100

*** Foot mount is standard on some planetary gear motors
 ** These options are available on non-vent style motors only

Power Connection

B	The motors are built as standard with a low profile conduit box which can be removed in the field for "flying leads."
L	Flying leads are 12" 3-wire with ground. Longer lengths available with volume. Not available with IP66 option.
C	Provides a 4 conductor male Brad Harrison power connector mounted in the conduit box and facing the rear of the motor. Requires a cordset for connection to the drive. (See Accessories)

Warranty

2	The 2 year warranty is applied only when the motor is used with an Emerson AC drive.
1	Any motor applied to a non-Emerson drive will carry only a 1 year warranty.

Mounting

N	The standard motor is a face mount, footless design.
F	Motor retains its face mount, but mounting feet are added.

Encoder

(Only available on non-vent, NV, motors.)

E2	2048 PPR Quadrature Encoder for use with the Unidrive SP. M12 connector. Drive supplies encoder power.
-----------	--

Brakes

(Only available on non-vent, NV, motors.)

H1	Mechanical holding brake mounted to the rear of the motor. Rated for holding duty, not stopping duty. 24VDC coil. 5 in-lb.
H2	Mechanical holding brake mounted to the rear of the motor. Rated for holding duty, not stopping duty. 24VDC coil. 15 in-lb.

Environmental Rating

P6	Convert any motor or gearmotor to an IP66 rating. New bearings and shaft seals are added. A conduit box is standard with a conduit fitting and 12" power cord to flying leads.
-----------	--



Groschopp Fractional HP AC Gear Motors

230V AC Inverter Duty Gear Motors

Planetary

Updated March 5, 2009

Standard Features

- + 230VAC, 3 Phase, 1.0 SF, 120Hz Constant HP Operation
- + TENV: 20:1 Constant Torque; TEFC: 5:1 Constant Torque
- + NEMA 34 Mounting Configuration, Brake & Encoder options available
- + Low Profile Conduit Box (flying leads and cord/connector options)
- + UL; Aluminum Frame, Class "F" Insulation
- + 2 Year Warranty with Emerson CT Drive



Output RPM	Ratio	Max		Order Code	List Price	Amps	Dimensions	Weight (lbs)	Output Shaft Diameter
		Torque (in-lb)	Backlash (degrees)						
4.3	377	700	0.4	CT66036	\$1,045	0.36	10.2 x 3.6 x 3.6	10.1	3/4"
5	308	221	0.8	CT72006	\$1,102	0.24	9.4 x 2.9 x 2.9	6.6	12mm
5	308	904	0.6	CT72500	\$1,503	0.41	11 x 3.6 x 3.6	13.0	19mm
7	236	1043	0.6	CT74003	\$1,539	0.69	10.4 x 3.6 x 3.6	14.5	19mm
6.9	246	650	0.55	CT66516	\$1,081	0.65	11 x 3.6 x 3.6	11.6	3/4"
7	236	221	0.8	CT74251	\$1,102	0.25	9.4 x 2.9 x 2.9	6.6	12mm
8.6	377	700	0.4	CT66210	\$1,045	0.47	10.2 x 3.6 x 3.6	10.1	3/4"
9.1	184	600	0.55	CT66515	\$1,081	0.67	11 x 3.6 x 3.6	11.6	3/4"
10	308	335	0.75	CT72251	\$1,247	0.38	8.6 x 2.9 x 2.9	10.5	14mm
10.4	160	575	0.55	CT66513	\$1,081	0.68	11 x 3.6 x 3.6	10.9	3/4"
11	150	1046	0.6	CT74001	\$1,566	0.91	11.9 x 4 x 4	17.0	19mm
12	124	402	0.75	CT73751	\$1,259	0.41	8.7 x 3.6 x 3.6	10.5	14mm
12.6	120	550	0.6	CT66045	\$1,045	0.68	11.5 x 3.6 x 3.6	9.4	3/4"
12.8	246	555	0.55	CT66205	\$1,045	0.54	10.2 x 3.6 x 3.6	10.1	3/4"
13	236	401	0.75	CT72250	\$1,247	0.5	8.5 x 2.9 x 2.9	7.5	14mm
13	124	1062	0.6	CT74000	\$1,611	1.05	12.2 x 4.4 x 4	19.0	19mm
17	93	89	1.2	CT74253	\$1,019	0.25	8.5 x 2.9 x 2.9	5.3	12mm
18	181	214	0.8	CT72004	\$1,102	0.38	8.5 x 2.9 x 2.9	6.6	12mm
18	184	221	0.55	CT66514	\$1,045	0.4	10.2 x 3.6 x 3.6	10.1	3/4"
18	93	404	0.75	CT73002	\$1,295	0.69	10.2 x 3.6 x 3.6	11.0	14mm
18	181	443	0.75	CT73001	\$1,259	0.51	8.7 x 3.6 x 3.6	10.5	14mm
18	93	1062	0.6	CT74004	\$1,566	1.48	11.9 x 4 x 4	17.0	19mm
18.4	90	525	0.55	CT66512	\$1,081	1.07	12.3 x 3.6 x 3.6	10.3	3/4"
19	181	1015	0.6	CT74002	\$1,566	1.08	11.9 x 4 x 4	17.0	19mm
20.8	160	417	0.55	CT66243	\$1,081	0.59	11 x 3.6 x 3.6	10.9	3/4"
21	150	202	0.8	CT72002	\$124	0.38	8.5 x 2.9 x 2.9	6.6	12mm
21	150	402	0.75	CT73000	\$1,259	0.54	8.7 x 3.6 x 3.6	10.5	14mm
26	124	162	0.8	CT72001	\$1,148	0.38	8.5 x 2.9 x 2.9	6.6	12mm
26	59	193	0.8	CT73501	\$1,073	0.41	9.3 x 3.6 x 3.6	8.5	12mm
26.3	61	500	0.45	CT66233	\$1,081	1.15	11.7 x 3.6 x 3.6	10.3	3/4"
27.9	120	279	0.6	CT66240	\$1,081	0.56	11 x 3.6 x 3.6	10.9	3/4"
28	59	417	0.75	CT73756	\$1,323	0.91	10.8 x 4 x 4	13.5	14mm
33	93	170	0.8	CT72753	\$1,019	0.5	8.5 x 2.9 x 2.9	5.2	12mm
35	46	44	1.15	CT74252	\$1,019	0.25	8.9 x 2.9 x 2.9	5.1	12mm
36	46	202	0.7	CT73755	\$1,295	0.69	8.9 x 3.6 x 3.6	10.1	14mm
36.7	90	264	0.55	CT66510	\$1,081	0.62	11 x 3.6 x 3.6	10.3	3/4"
40.3	40	450	0.55	CT70544	\$1,165	1.26	13.0 x 4.4 x 4	17.3	3/4"
53	29	97	0.75	CT72752	\$1,037	0.41	8 x 3.6 x 3.6	7.0	12mm
53	61	240	0.45	CT66511	\$1,081	0.74	9.6 x 3.6 x 3.6	10.3	3/4"
53.8	30	404	0.55	CT70612	\$1,153	1.74	12.2 x 4.4 x 4	18.0	3/4"
54	59	83	1.2	CT72008	\$1,019	0.38	9.4 x 2.9 x 2.9	5.2	12mm
57	29	214	0.7	CT73754	\$1,323	0.91	10.3 x 4 x 4	13.5	14mm
68	46	92	0.75	CT72007	\$1,019	0.5	8.9 x 2.9 x 2.9	5.2	12mm
79	20	325	0.75	CT70584	\$1,153	1.87	12.2 x 4.4 x 4	18.0	3/4"
82.4	40	128	0.55	CT66506	\$1,081	0.64	9.6 x 3.6 x 3.6	10.3	3/4"
86	19	181	0.7	CT73753	\$1,367	1.07	10.6 x 4.4 x 4	13.8	14mm
87	19	94	0.75	CT72751	\$1,073	0.69	10.2 x 3.6 x 3.6	8.5	12mm
105.1	30	162	0.55	CT66185	\$1,045	1.32	10.9 x 3.6 x 3.6	9.4	3/4"
110	29	43	1.15	CT72005	\$1,019	0.38	8.9 x 2.9 x 2.9	5.2	12mm
110.1	15	277	0.7	CT70602	\$1,165	2.59	13.0 x 4.4 x 4	20.5	3/4"
163	10	217	0.55	CT70600	\$1,165	2.71	13.0 x 4.4 x 4	20.5	3/4"
164	19	39	1.15	CT74250	\$1,019	0.5	8.9 x 2.9 x 2.9	5.2	12mm
194	16	33	1.15	CT72003	\$1,019	0.5	7.9 x 2.9 x 2.9	5.1	12mm
203	16	220	0.7	CT73752	\$1,367	2.89	10.6 x 4.4 x 4	14.6	14mm
210	16	94	0.75	CT73500	\$1,176	1.08	10.3 x 4 x 4	12.0	12mm
325	5	68	0.65	CT73750	\$1,323	1.53	9.6 x 4 x 4	13.5	14mm
326	5	111	0.7	CT70596	\$1,165	2.71	13.0 x 4.4 x 4	20.5	3/4"
631	5	16	1.1	CT72000	\$1,037	0.54	7.4 x 3.6 x 3.6	6.8	12mm
671	5	31	0.7	CT72750	\$1,176	1.08	8.3 x 4 x 4	11.5	12mm





Sorted by Order Code

Order Code	Model Number	List Price	Ratio	Output RPM	Torque (in-lb)	Max Backlash (degrees)	Amps	Dimensions	Weight (lbs)	Output Shaft Diam
CT66036	AC8040NV-PL73377	\$1,045	377	4.3	700.0	0.40	4.3	10.2 x 3.6 x 3.6	10.1	3/4"
CT66045	AC8040FC-PL73120	\$1,045	120	12.6	550.0	0.60	12.6	11.5 x 3.6 x 3.6	9.4	3/4"
CT66185	AC8040FC-PL7330	\$1,045	30	105.1	162.3	0.55	105.1	10.9 x 3.6 x 3.6	9.4	3/4"
CT66205	AC8040NV-PL73246	\$1,045	246	12.8	555.3	0.55	12.8	10.2 x 3.6 x 3.6	10.1	3/4"
CT66210	AC8040NV-PL73377	\$1,045	377	8.6	700.0	0.40	8.6	10.2 x 3.6 x 3.6	10.1	3/4"
CT66233	AC8060FC-PL7361	\$1,081	61	26.3	500.0	0.45	26.3	11.7 x 3.6 x 3.6	10.3	3/4"
CT66240	AC8060NV-PL73120	\$1,081	120	27.9	278.7	0.60	27.9	11 x 3.6 x 3.6	10.9	3/4"
CT66243	AC8060NV-PL73160	\$1,081	160	20.8	417.2	0.55	20.8	11 x 3.6 x 3.6	10.9	3/4"
CT66506	AC8060NV-PL7340	\$1,081	40	82.4	128.1	0.55	82.4	9.6 x 3.6 x 3.6	10.3	3/4"
CT66510	AC8060NV-PL7390	\$1,081	90	36.7	264.2	0.55	36.7	11 x 3.6 x 3.6	10.3	3/4"
CT66511	AC8060NV-PL7361	\$1,081	61	53.0	240.4	0.45	53.0	9.6 x 3.6 x 3.6	10.3	3/4"
CT66512	AC8060FC-PL7390	\$1,081	90	18.4	525.0	0.55	18.4	12.3 x 3.6 x 3.6	10.3	3/4"
CT66513	AC8060NV-PL73160	\$1,081	160	10.4	575.0	0.55	10.4	11 x 3.6 x 3.6	10.9	3/4"
CT66514	AC8040NV-PL73184	\$1,045	184	18.0	221.1	0.55	18.0	10.2 x 3.6 x 3.6	10.1	3/4"
CT66515	AC8060NV-PL73184	\$1,081	184	9.1	600.0	0.55	9.1	11 x 3.6 x 3.6	11.6	3/4"
CT66516	AC8060NV-PL73246	\$1,081	246	6.9	650.0	0.55	6.9	11 x 3.6 x 3.6	11.6	3/4"
CT70544	AC10080NV-PL7340	\$1,165	40	40.3	449.8	0.55	40.3	13.0 x 4.4 x 4	17.3	3/4"
CT70584	AC10060FC-PL7320	\$1,153	20	79.0	325.0	0.75	79.0	12.2 x 4.4 x 4	18.0	3/4"
CT70596	AC10080FC-PL7305	\$1,165	5	326.0	111.0	0.70	326.0	13.0 x 4.4 x 4	20.5	3/4"
CT70600	AC10080FC-PL7310	\$1,165	10	163.0	217.2	0.55	163.0	13.0 x 4.4 x 4	20.5	3/4"
CT70602	AC10080FC-PL7315	\$1,165	15	110.1	276.9	0.70	110.1	13.0 x 4.4 x 4	20.5	3/4"
CT70612	AC10060FC-PL7330	\$1,153	30	53.8	404.3	0.55	53.8	12.2 x 4.4 x 4	18.0	3/4"
CT72000	AC8040NV-PL5205iP	\$1,037	5	631	16	1.10	631	7.4 x 3.6 x 3.6	6.8	12mm
CT72001	AC6540NV-PL52124i	\$1,148	124	26	162	0.80	26	8.5 x 2.9 x 2.9	6.6	12mm
CT72002	AC6540NV-PL52150i	\$1,102	150	21	202	0.80	21	8.5 x 2.9 x 2.9	6.6	12mm
CT72003	AC6540NV-PL5216iP	\$1,019	16	194	33	1.15	194	7.9 x 2.9 x 2.9	5.1	12mm
CT72004	AC6540NV-PL5218i	\$1,102	181	18	214	0.80	18	8.5 x 2.9 x 2.9	6.6	12mm
CT72005	AC6540FC-PL5229iP	\$1,019	29	110	43	1.15	110	8.9 x 2.9 x 2.9	5.2	12mm
CT72006	AC6540FC-PL52308i	\$1,102	308	5	221	0.80	5	9.4 x 2.9 x 2.9	6.6	12mm
CT72007	AC6540FC-PL5246i	\$1,019	46	68	92	0.75	68	8.9 x 2.9 x 2.9	5.2	12mm
CT72008	AC6540FC-PL5259iP	\$1,019	59	54	83	1.20	54	9.4 x 2.9 x 2.9	5.2	12mm
CT72250	AC6540NV-PL62236i	\$1,247	236	13	401	0.75	13	8.5 x 2.9 x 2.9	7.5	14mm
CT72251	AC6540NV-PL62308i	\$1,247	308	10	335	0.75	10	8.6 x 2.9 x 2.9	10.5	14mm
CT72500	AC8040FC-PL81308i	\$1,503	308	5	904	0.60	5	11 x 3.6 x 3.6	13.0	19mm
CT72750	AC9060NV-PL5205i	\$1,176	5	671	31	0.70	671	8.3 x 4 x 4	11.5	12mm
CT72751	AC8060NV-PL5219i	\$1,073	19	87	94	0.75	87	10.2 x 3.6 x 3.6	8.5	12mm
CT72752	AC8040NV-PL5229i	\$1,037	29	53	97	0.75	53	8 x 3.6 x 3.6	7.0	12mm
CT72753	AC6540NV-PL5293i	\$1,019	93	33	170	0.80	33	8.5 x 2.9 x 2.9	5.2	12mm
CT73000	AC8040NV-PL62150i	\$1,259	150	21	402	0.75	21	8.7 x 3.6 x 3.6	10.5	14mm
CT73001	AC8040NV-PL62181i	\$1,259	181	18	443	0.75	18	8.7 x 3.6 x 3.6	10.5	14mm
CT73002	AC8060FC-PL6293i	\$405	93	18	404	0.75	18	10.2 x 3.6 x 3.6	11.0	14mm
CT73500	AC9060NV-PL5216i	\$1,176	16	210	94	0.75	210	10.3 x 4 x 4	12.0	12mm
CT73501	AC8060NV-PL5259i	\$1,073	59	26	193	0.80	26	9.3 x 3.6 x 3.6	8.5	12mm
CT73750	AC9060FC-PL6205i	\$1,323	5	325	68	0.65	325	9.6 x 4 x 4	13.5	14mm
CT73751	AC8040NV-PL62124i	\$1,259	124	12	402	0.75	12	8.7 x 3.6 x 3.6	10.5	14mm
CT73752	AC10060FC-PL6216i	\$1,367	16	203	220	0.70	203	10.6 x 4.4 x 4	14.6	14mm
CT73753	AC10060FC-PL6219i	\$1,367	19	86	181	0.70	86	10.6 x 4.4 x 4	13.8	14mm
CT73754	AC9060FC-PL6229i	\$1,323	29	57	214	0.70	57	10.3 x 4 x 4	13.5	14mm
CT73755	AC8060NV-PL6246i	\$1,295	46	36	202	0.70	36	8.9 x 3.6 x 3.6	10.1	14mm
CT73756	AC9060FC-PL6259i	\$1,323	59	28	417	0.75	28	10.8 x 4 x 4	13.5	14mm
CT74000	AC10060FC-PL81124i	\$1,611	124	13	1062	0.60	13	12.2 x 4.4 x 4	19.0	19mm
CT74001	AC9060FC-PL81150i	\$1,566	150	11	1046	0.60	11	11.9 x 4 x 4	17.0	19mm
CT74002	AC9060FC-PL81181i	\$1,566	181	19	1015	0.60	19	11.9 x 4 x 4	17.0	19mm
CT74003	AC8060NV-PL81236i	\$1,539	236	7	1043	0.60	7	10.4 x 3.6 x 3.6	14.5	19mm
CT74004	AC9060FC-PL8193i	\$1,566	93	18	1062	0.60	18	11.9 x 4 x 4	17.0	19mm
CT74250	AC6540FC-PL5219iP	\$1,019	19	164	39	1.15	164	8.9 x 2.9 x 2.9	5.2	12mm
CT74251	AC6540FC-PL52236i	\$1,102	236	7	221	0.80	7	9.4 x 2.9 x 2.9	6.6	12mm
CT74252	AC6540NV-PL5246iP	\$1,019	46	35	44	1.15	35	8.9 x 2.9 x 2.9	5.1	12mm
CT74253	AC6540NV-PL5293iP	\$1,019	93	17	89	1.20	17	8.5 x 2.9 x 2.9	5.3	12mm



Groschopp Fractional HP AC Gear Motors

230V AC Inverter Duty Gear Motors
Parallel Shaft

Updated March 5, 2009

Standard Features

- + 230VAC, 3 Phase, 1.0 SF, 120Hz Constant HP Operation
- + TENV: 20:1 Constant Torque; TEFC: 5:1 Constant Torque; No Constant HP
- + NEMA 34 Mounting Configuration, Brake & Encoder options available
- + Low Profile Conduit Box (flying leads and cord/connector options)
- + UL; Aluminum Frame, Class "F" Insulation
- + 2 Year Warranty with Emerson CT Drive



Output RPM	Ratio	Torque (in-lb)	Max Backlash (degrees)	Order Code	List Price	Amps	Dimensions	Weight (lbs)	Output Shaft Diameter
5.6	300	306.0	0.8	CT48274	\$948	0.34	8.9 x 4.9 x 4.9	12.4	3/4"
6.8	240	125.0	1.0	CT81543	\$764	0.24	7.7 x 3.7 x 3.7	6.5	1/2"
6.9	240	306.0	0.8	CT48273	\$948	0.35	8.9 x 4.9 x 4.9	12.4	3/4"
8.9	180	125.0	1.1	CT81541	\$764	0.31	8.6 x 3.7 x 3.7	6.5	1/2"
9.1	180	306.0	0.9	CT48272	\$948	0.35	8.9 x 4.9 x 4.9	12.4	3/4"
11.2	300	306.0	0.8	CT48447	\$948	0.37	8.9 x 4.9 x 4.9	12.4	3/4"
12.9	120	322.0	1.1	CT48271	\$948	0.40	8.9 x 4.9 x 4.9	12.4	3/4"
13.6	120	225.0	1.1	CT48053	\$841	0.35	8 x 4.2 x 4.2	9.5	5/8"
13.8	240	306.0	0.8	CT48444	\$948	0.40	8.9 x 4.9 x 4.9	12.4	3/4"
14.1	240	125.0	1.0	CT81542	\$764	0.30	7.7 x 3.7 x 3.7	6.5	1/2"
14.1	120	125.0	1.3	CT47865	\$698	0.34	7.9 x 3.7 x 3.7	8.5	1/2"
17.5	90	225.0	1.1	CT48052	\$841	0.39	8 x 4.2 x 4.2	9.5	5/8"
18.2	180	306.0	0.9	CT48440	\$948	0.42	8.9 x 4.9 x 4.9	12.4	3/4"
18.3	180	125.0	1.1	CT81540	\$764	0.33	7.8 x 3.7 x 3.7	6.5	1/2"
18.5	90	322.0	1.1	CT48456	\$984	0.67	9.7 x 4.9 x 4.9	13.9	3/4"
18.5	90	128.0	1.4	CT47864	\$698	0.35	7.9 x 3.7 x 3.7	8.5	1/2"
25.2	60	306.0	0.8	CT48257	\$948	0.68	10.3 x 4.9 x 4.9	11.6	3/4"
27	60	122.0	1.0	CT47863	\$698	0.36	7.9 x 3.7 x 3.7	8.5	1/2"
27.1	120	225.0	1.1	CT48143	\$841	0.45	8 x 4.2 x 4.2	9.5	5/8"
27.8	120	322.0	1.1	CT48437	\$984	0.59	8.9 x 4.9 x 4.9	13.9	3/4"
27.9	60	225.0	1.2	CT48154	\$877	0.66	8.8 x 4.2 x 4.2	10.6	5/8"
28.3	120	125.0	1.3	CT81534	\$698	0.36	7.9 x 3.7 x 3.7	8.5	1/2"
33.4	50	267.0	1.0	CT48454	\$984	1.05	11.1 x 4.9 x 4.9	13.1	3/4"
34.6	45	122.0	1.1	CT47862	\$698	0.40	7.9 x 3.7 x 3.7	8.5	1/2"
36.1	90	322.0	1.1	CT48431	\$984	0.71	9.9 x 4.9 x 4.9	13.9	3/4"
36.9	90	128.0	1.4	CT71765	\$698	0.39	7.9 x 3.7 x 3.7	8.5	1/2"
37.2	90	225.0	1.1	CT48155	\$877	0.57	8.8 x 4.2 x 4.2	11	5/8"
38.8	40	115.0	1.3	CT47861	\$698	0.40	7.9 x 3.7 x 3.7	8.5	1/2"
40.7	40	296.0	1.0	CT48452	\$984	1.12	11.1 x 4.9 x 4.9	13.1	3/4"
41.9	40	150.0	1.1	CT48153	\$877	0.66	8.8 x 4.2 x 4.2	10.6	5/8"
54	60	122.0	1.0	CT71756	\$698	0.46	7.9 x 3.7 x 3.7	8.5	1/2"
54.4	60	225.0	1.2	CT48136	\$877	0.68	8.8 x 4.2 x 4.2	11	5/8"
54.5	30	214.0	1.1	CT48451	\$984	1.10	11.1 x 4.9 x 4.9	13.1	3/4"
55.2	30	140.0	1.1	CT48152	\$877	0.68	8.8 x 4.2 x 4.2	11	5/8"
55.8	30	110.0	1.3	CT71764	\$808	0.66	8.6 x 3.7 x 3.7	9.5	1/2"
56.3	60	306.0	0.8	CT48455	\$984	1.61	11.1 x 4.9 x 4.9	13.1	3/4"
67.2	50	267.0	1.0	CT48453	\$984	1.62	11.1 x 4.9 x 4.9	13.1	3/4"
67.4	25	75.0	0.8	CT71763	\$808	0.65	8.6 x 3.7 x 3.7	9.5	1/2"
74.1	45	122.0	1.1	CT71754	\$808	0.58	8.6 x 3.7 x 3.7	9.7	1/2"
76.3	20	100.0	0.7	CT48039	\$841	0.66	9.4 x 4.2 x 4.2	8.8	5/8"
81.2	20	155.0	0.9	CT48450	\$984	1.12	11.1 x 4.9 x 4.9	13.1	3/4"
81.7	40	150.0	1.1	CT48130	\$877	0.67	8.8 x 4.2 x 4.2	10.6	5/8"
81.9	40	296.0	1.0	CT48405	\$984	1.75	11.1 x 4.9 x 4.9	13.1	3/4"
83.3	40	115.0	1.3	CT47999	\$808	0.59	8.6 x 3.7 x 3.7	9.7	1/2"
83.4	20	80.0	0.9	CT71762	\$808	0.67	8.6 x 3.7 x 3.7	9.5	1/2"
108.5	15	115.0	1.1	CT48449	\$808	1.11	11.1 x 4.9 x 4.9	13.1	3/4"
108.7	30	110.0	1.3	CT47991	\$808	0.68	8.6 x 3.7 x 3.7	9.7	1/2"
109.6	30	214.0	1.1	CT48397	\$984	1.72	11.1 x 4.9 x 4.9	13.1	3/4"
110.6	15	63.0	1.0	CT71761	\$808	0.68	8.6 x 3.7 x 3.7	9.5	1/2"
112.7	15	75.0	0.8	CT48149	\$877	1.04	10.2 x 4.2 x 4.2	11	5/8"
113.9	30	140.0	1.1	CT48151	\$877	1.58	10.2 x 4.2 x 4.2	11	5/8"
134.2	25	57.9	0.8	CT47982	\$808	0.56	8.6 x 3.7 x 3.7	9.5	1/2"
162.3	20	80.0	0.9	CT47974	\$808	0.71	8.6 x 3.7 x 3.7	9.5	1/2"
164	10	115.0	1.3	CT49343	\$874	1.48	11.2 x 4.9 x 4.9	16.5	3/4"
166.1	10	42.0	1.3	CT71759	\$808	0.68	8.6 x 3.7 x 3.7	9.5	1/2"
168.7	10	50.0	1.0	CT48147	\$877	1.04	10.2 x 4.2 x 4.2	11	5/8"
168.9	20	155.0	0.9	CT49322	\$874	1.66	11.2 x 4.9 x 4.9	16.5	3/4"
169.4	20	100.0	0.7	CT48150	\$877	1.60	10.2 x 4.2 x 4.2	11	5/8"
216.7	15	63.0	1.0	CT71760	\$698	1.21	9.2 x 3.7 x 3.7	9.5	1/2"
218.3	15	115.0	1.1	CT48387	\$984	1.75	11.1 x 4.9 x 4.9	12.6	3/4"
226.7	15	75.0	0.8	CT48148	\$877	1.59	10.2 x 4.2 x 4.2	9.5	5/8"
303.9	5	25.0	1.5	CT48036	\$841	0.67	9.4 x 4.2 x 4.2	8.8	5/8"
325.5	10	42.0	1.3	CT47951	\$698	1.21	9.2 x 3.7 x 3.7	8	1/2"
325.8	10	115.0	1.3	CT49315	\$874	2.11	11.2 x 4.9 x 4.9	15.2	3/4"
329.2	5	55.0	2.0	CT49342	\$874	1.46	11.2 x 4.9 x 4.9	15.2	3/4"
333.1	5	21.0	2.0	CT47947	\$808	0.67	8.6 x 3.7 x 3.7	9.5	1/2"
339.6	10	50.0	1.0	CT48146	\$877	1.59	10.2 x 4.2 x 4.2	9.5	5/8"
647.7	5	21.0	2.0	CT47948	\$808	0.72	8.6 x 3.7 x 3.7	9.5	1/2"
654.2	5	55.0	2.0	CT49311	\$874	2.05	11.2 x 4.9 x 4.9	15.2	3/4"
676.5	5	25.0	1.5	CT48145	\$877	1.60	10.2 x 4.2 x 4.2	9.5	5/8"



Groschopp Fractional HP AC Gear Motors

230V AC Inverter Duty Gear Motors

Parallel Shaft



Sorted by Order Code

Order Code	Model Number	List Price	Ratio	Output RPM	Torque (in-lb)	Max Backlash (degrees)	Amps	Dimensions	Weight (lbs)	Output Shaft Diam
CT47861	AC8040NV-PS1940	\$698	40	38.8	115.0	1.3	0.40	7.9 x 3.7 x 3.7	8.5	1/2"
CT47862	AC8040NV-PS1945	\$698	45	34.6	122.0	1.1	0.40	7.9 x 3.7 x 3.7	8.5	1/2"
CT47863	AC8040NV-PS1960	\$698	60	27	122.0	1.0	0.36	7.9 x 3.7 x 3.7	8.5	1/2"
CT47864	AC8040NV-PS1990	\$698	90	18.5	128.0	1.4	0.35	7.9 x 3.7 x 3.7	8.5	1/2"
CT47865	AC8040NV-PS19120	\$698	120	14.1	125.0	1.3	0.34	7.9 x 3.7 x 3.7	8.5	1/2"
CT47947	AC8060NV-PS1905	\$808	5	333.1	21.0	2.0	0.67	8.6 x 3.7 x 3.7	9.5	1/2"
CT47948	AC8060NV-PS1905	\$808	5	647.7	21.0	2.0	0.72	8.6 x 3.7 x 3.7	9.5	1/2"
CT47951	AC8040FC-PS1910	\$698	10	325.5	42.0	1.3	1.21	9.2 x 3.7 x 3.7	8	1/2"
CT47974	AC8060NV-PS1920	\$808	20	162.3	80.0	0.9	0.71	8.6 x 3.7 x 3.7	9.5	1/2"
CT47982	AC8060NV-PS1925	\$808	25	134.2	57.9	0.8	0.56	8.6 x 3.7 x 3.7	9.5	1/2"
CT47991	AC8060NV-PS1930	\$808	30	108.7	110.0	1.3	0.68	8.6 x 3.7 x 3.7	9.7	1/2"
CT47999	AC8060NV-PS1940	\$808	40	83.3	115.0	1.3	0.59	8.6 x 3.7 x 3.7	9.7	1/2"
CT48036	AC8040FC-PS2105	\$841	5	303.9	25.0	1.5	0.67	9.4 x 4.2 x 4.2	8.8	5/8"
CT48039	AC8040FC-PS2120	\$841	20	76.3	100.0	0.7	0.66	9.4 x 4.2 x 4.2	8.8	5/8"
CT48052	AC8040NV-PS2190	\$841	90	17.5	225.0	1.1	0.39	8 x 4.2 x 4.2	9.5	5/8"
CT48053	AC8040NV-PS21120	\$841	120	13.6	225.0	1.1	0.35	8 x 4.2 x 4.2	9.5	5/8"
CT48130	AC8060NV-PS2140	\$877	40	81.7	150.0	1.1	0.67	8.8 x 4.2 x 4.2	10.6	5/8"
CT48136	AC8060NV-PS2160	\$877	60	54.4	225.0	1.2	0.68	8.8 x 4.2 x 4.2	11	5/8"
CT48143	AC8040NV-PS21120	\$841	120	27.1	225.0	1.1	0.45	8 x 4.2 x 4.2	9.5	5/8"
CT48145	AC8060FC-PS2105	\$877	5	676.5	25.0	1.5	1.60	10.2 x 4.2 x 4.2	9.5	5/8"
CT48146	AC8060FC-PS2110	\$877	10	339.6	50.0	1.0	1.59	10.2 x 4.2 x 4.2	9.5	5/8"
CT48147	AC8060FC-PS2110	\$877	10	168.7	50.0	1.0	1.04	10.2 x 4.2 x 4.2	11	5/8"
CT48148	AC8060FC-PS2115	\$877	15	226.7	75.0	0.8	1.59	10.2 x 4.2 x 4.2	9.5	5/8"
CT48149	AC8060FC-PS2115	\$877	15	112.7	75.0	0.8	1.04	10.2 x 4.2 x 4.2	11	5/8"
CT48150	AC8060FC-PS2120	\$877	20	169.4	100.0	0.7	1.60	10.2 x 4.2 x 4.2	11	5/8"
CT48151	AC8060FC-PS2130	\$877	30	113.9	140.0	1.1	1.58	10.2 x 4.2 x 4.2	11	5/8"
CT48152	AC8060NV-PS2130	\$877	30	55.2	140.0	1.1	0.68	8.8 x 4.2 x 4.2	11	5/8"
CT48153	AC8060NV-PS2140	\$877	40	41.9	150.0	1.1	0.66	8.8 x 4.2 x 4.2	10.6	5/8"
CT48154	AC8060FC-PS2160	\$877	60	27.9	225.0	1.2	0.66	8.8 x 4.2 x 4.2	10.6	5/8"
CT48155	AC8060NV-PS2190	\$877	90	37.2	225.0	1.1	0.57	8.8 x 4.2 x 4.2	11	5/8"
CT48257	AC8040FC-PS2360	\$948	60	25.2	306.0	0.8	0.68	10.3 x 4.9 x 4.9	11.6	3/4"
CT48271	AC8040NV-PS23120	\$948	120	12.9	322.0	1.1	0.40	8.9 x 4.9 x 4.9	12.4	3/4"
CT48272	AC8040NV-PS23180	\$948	180	9.1	306.0	0.9	0.35	8.9 x 4.9 x 4.9	12.4	3/4"
CT48273	AC8040NV-PS23240	\$948	240	6.9	306.0	0.8	0.35	8.9 x 4.9 x 4.9	12.4	3/4"
CT48274	AC8040NV-PS23300	\$948	300	5.6	306.0	0.8	0.34	8.9 x 4.9 x 4.9	12.4	3/4"
CT48387	AC8060FC-PS2315	\$984	15	218.3	115.0	1.1	1.75	11.1 x 4.9 x 4.9	12.6	3/4"
CT48397	AC8060FC-PS2330	\$984	30	109.6	214.0	1.1	1.72	11.1 x 4.9 x 4.9	13.1	3/4"
CT48405	AC8060FC-PS2340	\$984	40	81.9	296.0	1.0	1.75	11.1 x 4.9 x 4.9	13.1	3/4"
CT48431	AC8060NV-PS2390	\$984	90	36.1	322.0	1.1	0.71	9.9 x 4.9 x 4.9	13.9	3/4"
CT48437	AC8060NV-PS23120	\$984	120	27.8	322.0	1.1	0.59	8.9 x 4.9 x 4.9	13.9	3/4"
CT48440	AC8040NV-PS23180	\$948	180	18.2	306.0	0.9	0.42	8.9 x 4.9 x 4.9	12.4	3/4"
CT48444	AC8040NV-PS23240	\$948	240	13.8	306.0	0.8	0.40	8.9 x 4.9 x 4.9	12.4	3/4"
CT48447	AC8040NV-PS23300	\$948	300	11.2	306.0	0.8	0.37	8.9 x 4.9 x 4.9	12.4	3/4"
CT48449	AC8060FC-PS2315	\$808	15	108.5	115.0	1.1	1.11	11.1 x 4.9 x 4.9	13.1	3/4"
CT48450	AC8060FC-PS2320	\$984	20	81.2	155.0	0.9	1.12	11.1 x 4.9 x 4.9	13.1	3/4"
CT48451	AC8060FC-PS2330	\$984	30	54.5	214.0	1.1	1.10	11.1 x 4.9 x 4.9	13.1	3/4"
CT48452	AC8060FC-PS2340	\$984	40	40.7	296.0	1.0	1.12	11.1 x 4.9 x 4.9	13.1	3/4"
CT48453	AC8060FC-PS2350	\$984	50	67.2	267.0	1.0	1.62	11.1 x 4.9 x 4.9	13.1	3/4"
CT48454	AC8060FC-PS2350	\$984	50	33.4	267.0	1.0	1.05	11.1 x 4.9 x 4.9	13.1	3/4"
CT48455	AC8060FC-PS2360	\$984	60	56.3	306.0	0.8	1.61	11.1 x 4.9 x 4.9	13.1	3/4"
CT48456	AC8060NV-PS2390	\$984	90	18.5	322.0	1.1	0.67	9.7 x 4.9 x 4.9	13.9	3/4"
CT49311	AC9060FC-PS2305	\$874	5	654.2	55.0	2.0	2.05	11.2 x 4.9 x 4.9	15.2	3/4"
CT49315	AC9060FC-PS2310	\$874	10	325.8	115.0	1.3	2.11	11.2 x 4.9 x 4.9	15.2	3/4"
CT49322	AC9060FC-PS2320	\$874	20	168.9	155.0	0.9	1.66	11.2 x 4.9 x 4.9	16.5	3/4"
CT49342	AC9060FC-PS2305	\$874	5	329.2	55.0	2.0	1.46	11.2 x 4.9 x 4.9	15.2	3/4"
CT49343	AC9060FC-PS2310	\$874	10	164	115.0	1.3	1.48	11.2 x 4.9 x 4.9	16.5	3/4"
CT71754	AC8060NV-PS1945	\$808	45	74.1	122.0	1.1	0.58	8.6 x 3.7 x 3.7	9.7	1/2"
CT71756	AC8040NV-PS1960	\$698	60	54	122.0	1.0	0.46	7.9 x 3.7 x 3.7	8.5	1/2"
CT71759	AC8060NV-PS1910	\$808	10	166.1	42.0	1.3	0.68	8.6 x 3.7 x 3.7	9.5	1/2"
CT71760	AC8040FC-PS1915	\$698	15	216.7	63.0	1.0	1.21	9.2 x 3.7 x 3.7	9.5	1/2"
CT71761	AC8060NV-PS1915	\$808	15	110.6	63.0	1.0	0.68	8.6 x 3.7 x 3.7	9.5	1/2"
CT71762	AC8060NV-PS1920	\$808	20	83.4	80.0	0.9	0.67	8.6 x 3.7 x 3.7	9.5	1/2"
CT71763	AC8060NV-PS1925	\$808	25	67.4	75.0	0.8	0.65	8.6 x 3.7 x 3.7	9.5	1/2"
CT71764	AC8060NV-PS1930	\$808	30	55.8	110.0	1.3	0.66	8.6 x 3.7 x 3.7	9.5	1/2"
CT71765	AC8040NV-PS1990	\$698	90	36.9	128.0	1.4	0.39	7.9 x 3.7 x 3.7	8.5	1/2"
CT81534	AC8040NV-PS19120	\$698	120	28.3	125.0	1.3	0.36	7.9 x 3.7 x 3.7	8.5	1/2"
CT81540	AC6540NV-PS19180	\$764	180	18.3	125.0	1.1	0.33	7.8 x 3.7 x 3.7	6.5	1/2"
CT81541	AC6540FC-PS19180	\$764	180	8.9	125.0	1.1	0.31	8.6 x 3.7 x 3.7	6.5	1/2"
CT81542	AC6540NV-PS19240	\$764	240	14.1	125.0	1.0	0.30	7.7 x 3.7 x 3.7	6.5	1/2"
CT81543	AC6540NV-PS19240	\$764	240	6.8	125.0	1.0	0.24	7.7 x 3.7 x 3.7	6.5	1/2"



hide hide

Groschopp Fractional HP AC Gear Motors

230V AC Inverter Duty Gear Motors
Right Angle

Updated March 5, 2009

Standard Features

- + 230VAC, 3 Phase, 1.0 SF
- + TENV: 20:1 Constant Torque; TEFC: 5:1 Constant Torque; No Constant HP
- + Low Profile Conduit Box (flying leads and cord/connector options)
- + Motor Options may be added to any Gear Motor
- + UL: Aluminum Frame, Class "F" Insulation
- + 2 Year Warranty with Emerson CT Drive



Output RPM	Model	HP	Watts	Torque		Max Backlash (degrees)	Order Code	List Price	Amps	Dimensions	Weight (lbs)	Hollow Output Diameter (mm)
				Ratio	(in-lb)							
15.1	AC8040FC-RA40100T	0.054	40	100	226.4	0.13	CT75000	\$822	0.68	11.3 x 7.0 x 7.0	11	18
16.1	AC8060FC-RA50100T	0.102	76	100	401.1	0.94	CT75250	\$984	1.15	13.4 x 7.8 x 7.8	15	25
19.5	AC8040FC-RA4080T	0.043	32	80	138.9	0.13	CT75004	\$822	0.63	11.3 x 7.0 x 7.0	11	18
20.2	AC8040FC-RA3080T	0.030	22	80	93.7	0.48	CT74756	\$770	0.58	10.4 x 6.2 x 6.2	8.5	14
20.7	AC8060FC-RA5080T	0.064	48	80	196.7	0.94	CT75254	\$984	1.1	13.4 x 7.8 x 7.8	15	25
26.0	AC8040FC-RA4060T	0.044	33	60	107.5	0.13	CT75003	\$822	0.63	11.3 x 7.0 x 7.0	11	18
26.1	AC8040NV-RA2660T	0.028	21	60	68.1	0.39	CT74507	\$742	0.4	8.4 x 5.8 x 5.8	7	12
27.4	AC8040FC-RA3060T	0.027	20	60	61.7	0.48	CT74755	\$803	0.57	10.4 x 6.2 x 6.2	8.5	14
27.9	AC8060FC-RA5060T	0.049	36	60	109.5	0.94	CT75253	\$984	1.05	13.4 x 7.8 x 7.8	15	25
30.2	AC8040FC-RA4050T	0.065	48	50	134.7	0.13	CT75002	\$822	0.68	11.3 x 7.0 x 7.0	11	18
32.0	AC8060FC-RA5050T	0.133	99	50	259.8	0.94	CT75252	\$984	1.16	13.4 x 7.8 x 7.8	15	25
33.0	AC8040FC-RA3050T	0.027	20	50	51.2	0.48	CT74754	\$770	0.57	10.4 x 6.2 x 6.2	8.5	14
33.3	AC8040FC-RA2650T	0.025	19	50	47.8	0.39	CT74506	\$742	0.56	9.8 x 5.8 x 5.8	7	12
37.8	AC8040FC-RA4040T	0.071	53	40	119.1	0.13	CT75001	\$822	0.68	11.3 x 7.0 x 7.0	11	18
39.3	AC8040NV-RA2640T	0.036	25	40	39.3	0.39	CT74505	\$773	0.39	8.4 x 5.8 x 5.8	7	12
37.8	AC8040FC-RA3040T	0.074	55	40	123.7	0.48	CT74753	\$770	0.68	10.4 x 6.2 x 6.2	8.5	14
42.4	AC9060FC-RA5040T	0.115	86	40	171.2	0.94	CT75251	\$984	1.34	13.1 x 8.0 x 8.0	18	25
50.4	AC8040FC-RA3030T	0.082	61	30	102.5	0.48	CT74752	\$770	0.68	10.4 x 6.2 x 6.2	8.5	14
55.3	AC8040FC-RA2630T	0.032	24	30	36.2	0.39	CT74504	\$742	0.56	9.8 x 5.8 x 5.8	7	12
55.0	AC9060FC-RA5030T	0.192	143	30	219.6	0.94	CT76002	\$1,009	1.45	13.1 x 8.0 x 8.0	18	25
55.7	AC10060NV-RA4030T	0.093	69	30	104.7	0.13	CT76254	\$920	0.97	11.2 x 8.0 x 8.0	17	18
65.7	AC9060FC-RA4025T	0.229	171	25	219.4	0.13	CT75750	\$880	1.47	12.3 x 7.2 x 7.2	15	18
65.0	AC9060FC-RA5025T	0.242	181	25	234.6	0.94	CT76001	\$1,009	1.53	13.1 x 8.0 x 8.0	18	25
67.0	AC8060FC-RA3025T	0.095	71	25	89.2	0.48	CT74751	\$803	1.05	11.1 x 6.2 x 6.2	10	14
81.3	AC10060FC-RA5020T	0.249	185	20	192.8	0.94	CT76000	\$1,009	1.53	13.4 x 8.8 x 8.8	20	25
86.7	AC8040FC-RA2620T	0.037	28	20	26.9	0.39	CT74503	\$773	1.02	9.8 x 5.8 x 5.8	7	12
80.1	AC10080NV-RA4020T	0.224	167	20	176.2	0.13	CT76253	\$932	1.31	12.0 x 8.0 x 8.0	19	18
80.6	AC8060FC-RA3020T	0.170	127	20	132.7	0.48	CT74750	\$803	1.14	11.1 x 6.2 x 6.2	10	14
104.5	AC10060FC-RA5015T	0.338	252	15	203.8	0.94	CT76502	\$1,049	2.03	13.4 x 8.8 x 8.8	20	25
109.0	AC10060FC-RA4015T	0.244	182	15	140.9	0.13	CT76252	\$920	1.78	12.6 x 8.0 x 8.0	17	18
109.5	AC8040FC-RA2615T	0.040	30	15	23.4	0.39	CT74502	\$773	0.57	9.8 x 5.8 x 5.8	7	12
111.2	AC9060FC-RA3015T	0.204	152	15	115.7	0.48	CT75502	\$828	1.4	11.4 x 6.4 x 6.4	12.5	14
156.7	AC10060FC-RA4010T	0.358	267	10	143.8	0.13	CT76251	\$920	2.03	12.6 x 8.0 x 8.0	17	18
158.9	AC10060FC-RA5010T	0.290	216	10	115.0	0.94	CT76501	\$1,049	1.94	13.4 x 8.8 x 8.8	20	25
162.5	AC9060FC-RA3010T	0.281	209	10	108.8	0.48	CT75501	\$828	1.53	11.4 x 6.4 x 6.4	12.5	14
169.9	AC8060FC-RA2610T	0.079	59	10	29.5	0.39	CT74501	\$773	1.03	10.6 x 5.8 x 5.8	9	12
209.5	AC10060FC-RA5007T	0.314	234	7.5	94.5	0.94	CT76500	\$1,049	2.02	13.4 x 8.8 x 8.8	20	25
219.6	AC8040FC-RA2607T	0.035	26	7.5	10.1	0.39	CT74500	\$773	0.57	9.8 x 5.8 x 5.8	7	12
216.7	AC9060FC-RA3007T	0.266	199	7.5	77.4	0.48	CT75500	\$828	1.53	11.4 x 6.4 x 6.4	12.5	14
217.3	AC10080FC-RA4007T	0.490	365	7.5	142.1	0.13	CT76250	\$932	2.87	13.4 x 8.0 x 8.0	19	18



Page 2 of 2

Groschopp Fractional HP AC Gear Motors

230V AC Inverter Duty Gear Motors
Right Angle



Sorted by Order Code

Order Code	Amps	HP	Watts	Model Number	List Price	Ratio	Output RPM	Torque (in-lb)	Max Backlash (degrees)	Amps	Dimensions	Weight (lbs)	Output Shaft Diam
CT74501	1.06	0.113	84	AC8060FC-RA2610T	\$840	10	167	42.7	0.39	1.06	10.6 x 5.8 x 5.8	9	12mm
CT74502	0.62	0.0611	46	AC8040FC-RA2615T	\$840	15	105	36.8	0.39	0.62	9.8 x 5.8 x 5.8	7	12mm
CT74503	0.6	0.054	40	AC8040FC-RA2620T	\$840	20	80	42.8	0.39	0.6	9.8 x 5.8 x 5.8	7	12mm
CT74504	0.58	0.0436	33	AC8040FC-RA2630T	\$804	30	54	50.9	0.39	0.58	9.8 x 5.8 x 5.8	7	12mm
CT74505	0.41	0.0384	29	AC8040NV-RA2640T	\$840	40	39	62.9	0.39	0.41	8.4 x 5.8 x 5.8	7	12mm
CT74506	0.57	0.0302	23	AC8040FC-RA2650T	\$804	50	33	57.8	0.39	0.57	9.8 x 5.8 x 5.8	7	12mm

MT Category

CT74507	0.4	0.0298	22	AC8040NV-RA2660T	\$804	60	26	72.8	0.39	0.4	8.4 x 5.8 x 5.8	7	12mm
CT74750	1.14	0.1697	127	AC8060FC-RA3020T	\$869	20	81	132.7	0.48	1.14	11.1 x 6.2 x 6.2	10	14mm
CT74751	1.09	0.1241	93	AC8060FC-RA3025T	\$869	25	66	119.1	0.48	1.09	11.1 x 6.2 x 6.2	10	14mm
CT74752	0.68	0.0819	61	AC8040FC-RA3030T	\$834	30	50	102.5	0.48	0.68	10.4 x 6.2 x 6.2	8.5	14mm
CT74753	0.65	0.0656	49	AC8040FC-RA3040T	\$834	40	39	107.3	0.48	0.65	10.4 x 6.2 x 6.2	8.5	14mm
CT74754	0.58	0.0347	26	AC8040FC-RA3050T	\$834	50	32	67.4	0.48	0.58	10.4 x 6.2 x 6.2	8.5	14mm
CT74755	0.58	0.0349	26	AC8040FC-RA3060T	\$869	60	27	81.6	0.48	0.58	10.4 x 6.2 x 6.2	8.5	14mm
CT74756	0.58	0.0302	22	AC8040FC-RA3080T	\$834	80	20	94.1	0.48	0.58	10.4 x 6.2 x 6.2	8.5	14mm
CT75000	0.68	0.0543	40	AC8040FC-RA40100T	\$890	100	15	226.4	0.13	0.68	11.3 x 7.0 x 7.0	11	18mm
CT75001	0.68	0.0714	53	AC8040FC-RA4040T	\$890	40	38	119.1	0.13	0.68	11.3 x 7.0 x 7.0	11	18mm
CT75002	0.68	0.0646	48	AC8040FC-RA4050T	\$890	50	30	134.7	0.13	0.68	11.3 x 7.0 x 7.0	11	18mm
CT75003	0.68	0.0578	43	AC8040FC-RA4060T	\$890	60	25	144.6	0.13	0.68	11.3 x 7.0 x 7.0	11	18mm
CT75004	0.68	0.0546	41	AC8040FC-RA4080T	\$890	80	19	182.3	0.13	0.68	11.3 x 7.0 x 7.0	11	18mm
CT75250	1.14	0.1015	76	AC8060FC-RA50100T	\$1,066	100	16	397	0.94	1.14	13.4 x 7.8 x 7.8	15	25mm
CT75251	1.53	0.2493	186	AC9060FC-RA5040T	\$1,066	40	41	386.8	0.94	1.53	13.1 x 8.0 x 8.0	18	25mm
CT75252	1.16	0.1334	100	AC8060FC-RA5050T	\$1,066	50	32	262.8	0.94	1.16	13.4 x 7.8 x 7.8	15	25mm
CT75253	1.13	0.1028	77	AC8060FC-RA5060T	\$1,066	60	27	239.7	0.94	1.13	13.4 x 7.8 x 7.8	15	25mm
CT75254	1.1	0.0807	60	AC8060FC-RA5080T	\$1,066	80	21	248.4	0.94	1.1	13.4 x 7.8 x 7.8	15	25mm
CT75500	1.53	0.2784	208	AC9060FC-RA3007T	\$896	7.5	217	81	0.48	1.53	11.4 x 6.4 x 6.4	12.5	14mm
CT75501	1.53	0.2806	209	AC9060FC-RA3010T	\$896	10	163	108.8	0.48	1.53	11.4 x 6.4 x 6.4	12.5	14mm
CT75502	1.48	0.2496	186	AC9060FC-RA3015T	\$896	15	109	143.8	0.48	1.48	11.4 x 6.4 x 6.4	12.5	14mm
CT75750	1.53	0.2524	188	AC9060FC-RA4025T	\$953	25	65	244.7	0.13	1.53	12.3 x 7.2 x 7.2	15	18mm
CT76000	1.95	0.3462	258	AC10060FC-RA5020T	\$1,092	20	78	278.4	0.94	1.95	13.4 x 8.8 x 8.8	20	25mm
CT76001	1.53	0.242	181	AC9060FC-RA5025T	\$1,092	25	65	234.6	0.94	1.53	13.1 x 8.0 x 8.0	18	25mm
CT76002	1.52	0.2182	163	AC9060FC-RA5030T	\$1,092	30	54	253.5	0.94	1.52	13.1 x 8.0 x 8.0	18	25mm
CT76250	2.71	0.4924	367	AC10080FC-RA4007T	\$1,009	7.5	217	142.8	0.13	2.71	13.4 x 8.0 x 8.0	19	18mm
CT76251	1.95	0.3695	276	AC10060FC-RA4010T	\$997	10	157	148.6	0.13	1.95	12.6 x 8.0 x 8.0	17	18mm
CT76252	1.94	0.3492	261	AC10060FC-RA4015T	\$997	15	105	210.4	0.13	1.94	12.6 x 8.0 x 8.0	17	18mm
CT76253	1.26	0.2333	174	AC10080NV-RA4020T	\$1,009	20	81	182.6	0.13	1.26	12.0 x 8.0 x 8.0	19	18mm
CT76254	1.01	0.1284	96	AC10060NV-RA4030T	\$997	30	55	147.6	0.13	1.01	11.2 x 8.0 x 8.0	17	18mm
CT76500	1.92	0.3197	239	AC10060FC-RA5007T	\$1,137	7.5	210	96.1	0.94	1.92	13.4 x 8.8 x 8.8	20	25mm
CT76501	1.86	0.302	225	AC10060FC-RA5010T	\$1,137	10	158	120.3	0.94	1.86	13.4 x 8.8 x 8.8	20	25mm
CT76502	1.95	0.3484	260	AC10060FC-RA5015T	\$1,137	15	105	210.2	0.94	1.95	13.4 x 8.8 x 8.8	20	25mm