

# Unidrive/Digitax/Commander to CTVUE 304K

Digitax ST



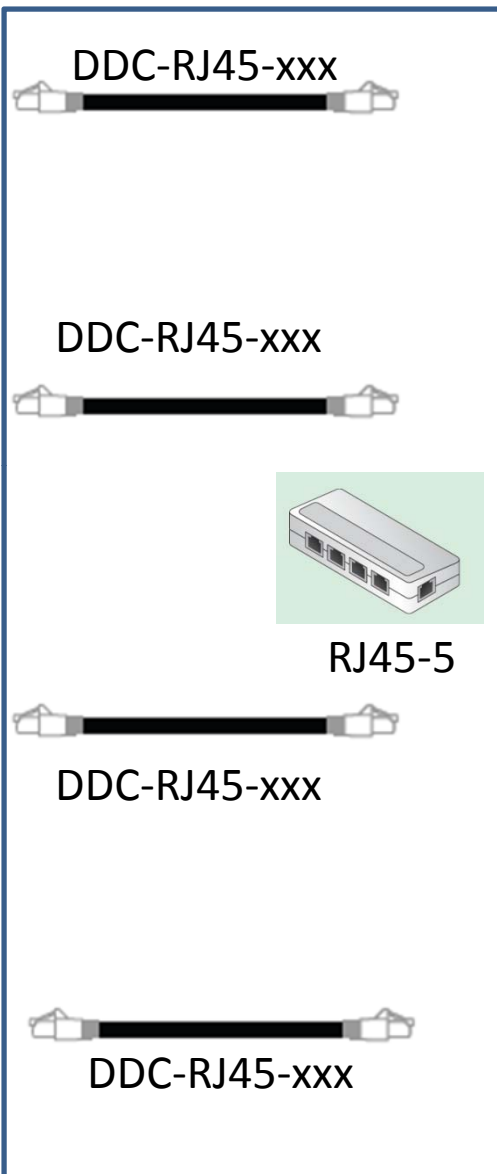
Unidrive SP



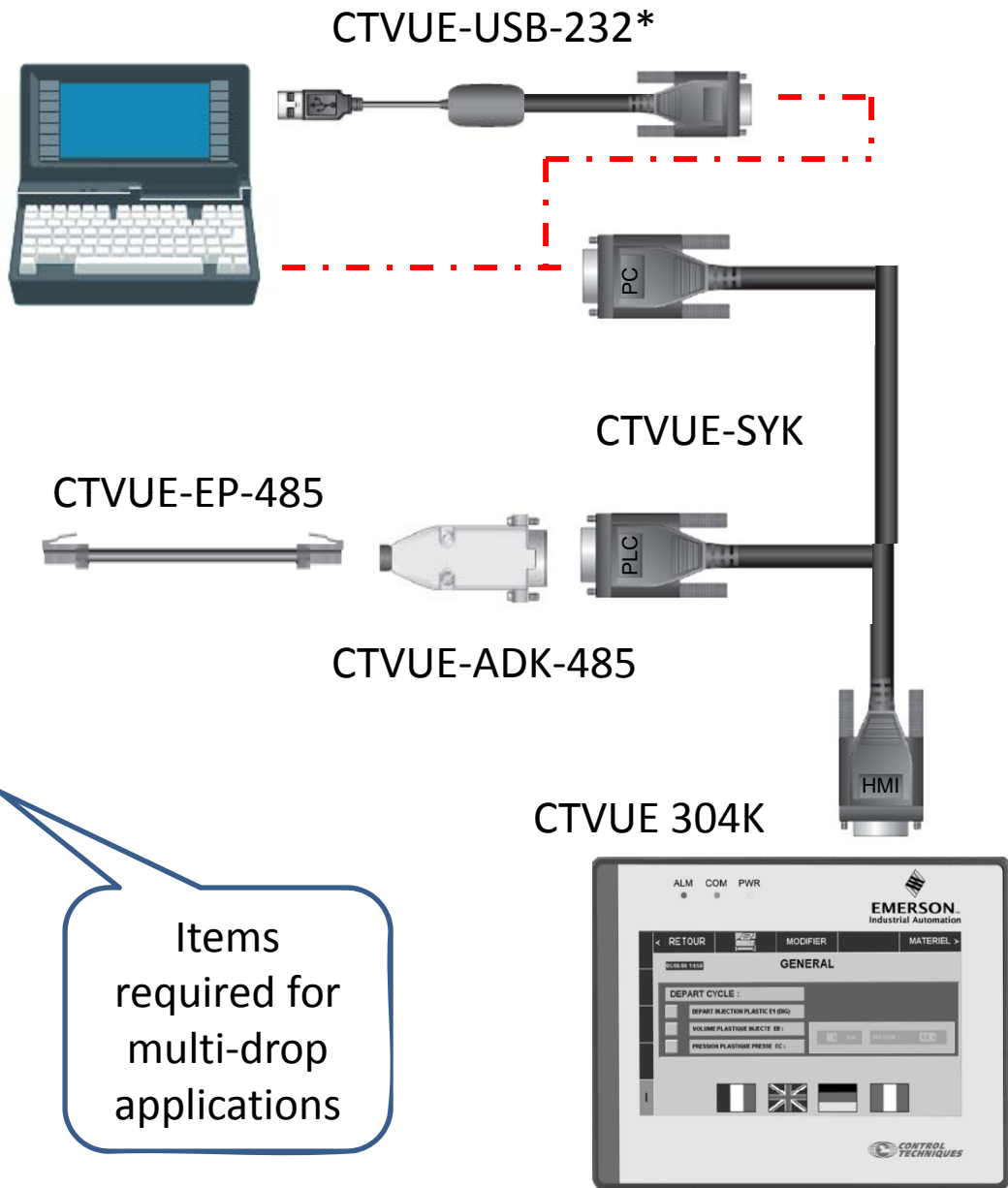
Commander SX



Commander SK



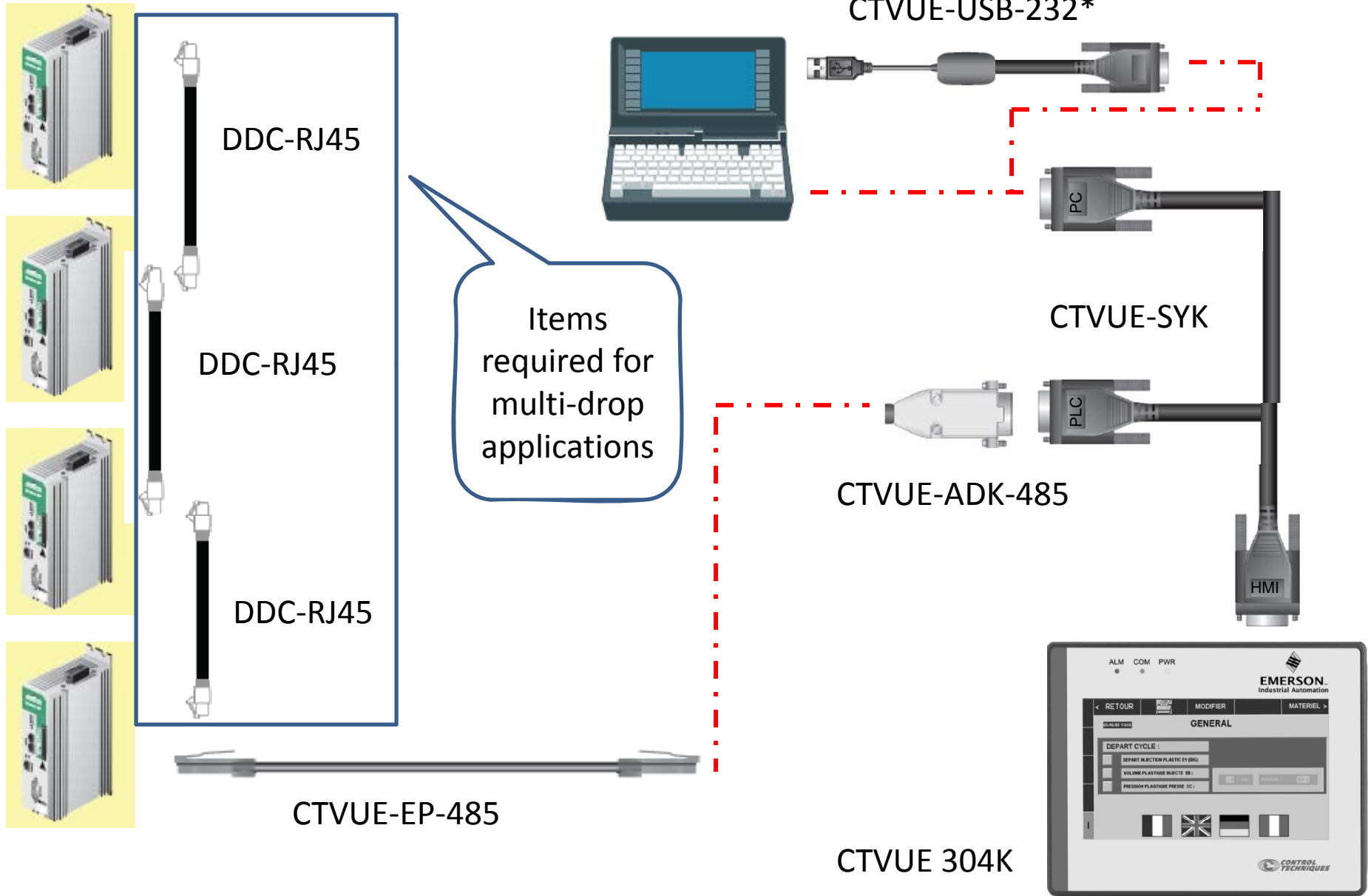
Items required for multi-drop applications



\*Ordering the CTVUE-USB-232 includes the 6' CTVUE-SYK 'Y' Cable

# Epsilon EP to CTVUE 304K

Epsilon EP



\*Ordering the CTVUE-USB-232 includes the 6' CTVUE-SYK 'Y' Cable

# En, MDS, Epsilon Classic to CTVUE 304K

En



CTVUE-MME-485



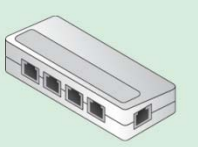
CTVUE-USB-232\*



MDS




CTVUE-MME-485



RJ45-5

DDC-RJ45-xxx



CTVUE-SYK



CTVUE-ADK-485

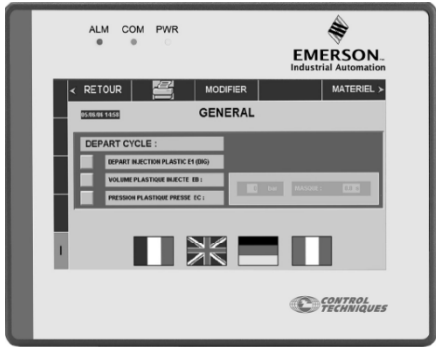


Epsilon



CTVUE-MME-485

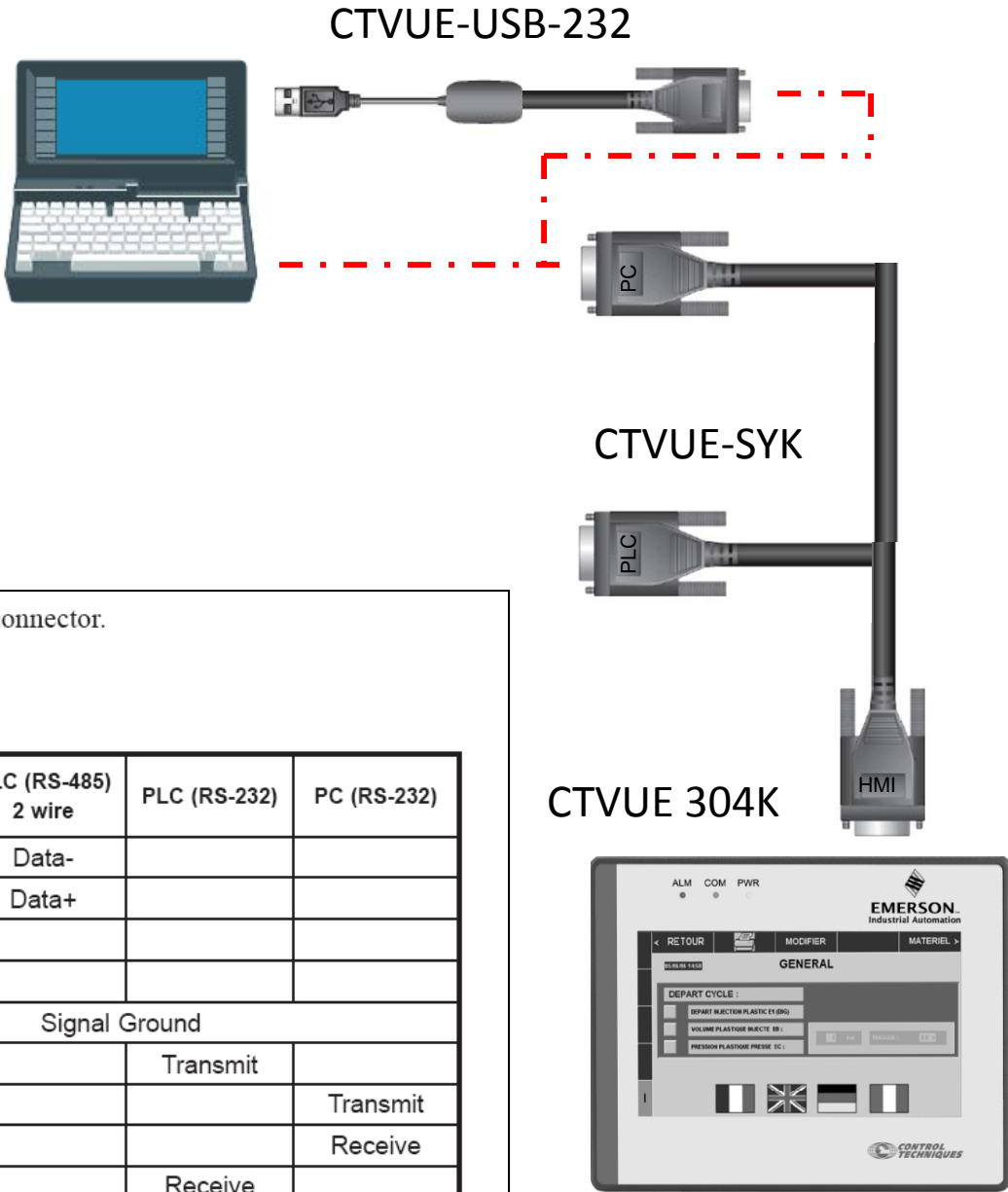
Items  
required for  
multi-drop  
applications



CTVUE 304K

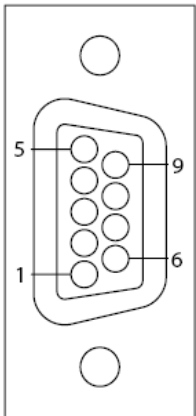
\*Ordering the CTVUE-USB-232 includes the 6' CTVUE-SYK 'Y' Cable

# CTVUE 304K Pin out details



The 304K has two serial ports combined into a single DB9-M connector.

### PC (RS-232)



DB9-M

PIN	SYMBOL	PLC (RS-485) 4 wire	PLC (RS-485) 2 wire	PLC (RS-232)	PC (RS-232)
1	Rx-	Rx-	Data-		
2	Rx+	Rx+	Data+		
3	Tx-	Tx-			
4	Tx+	Tx+			
5	GND	Signal Ground			
6	TxD			Transmit	
7	TxD				Transmit
8	RxD				Receive
9	RxD			Receive	

CTVUE 304K

