

Quantum III Size 3

Plastics and Accessories

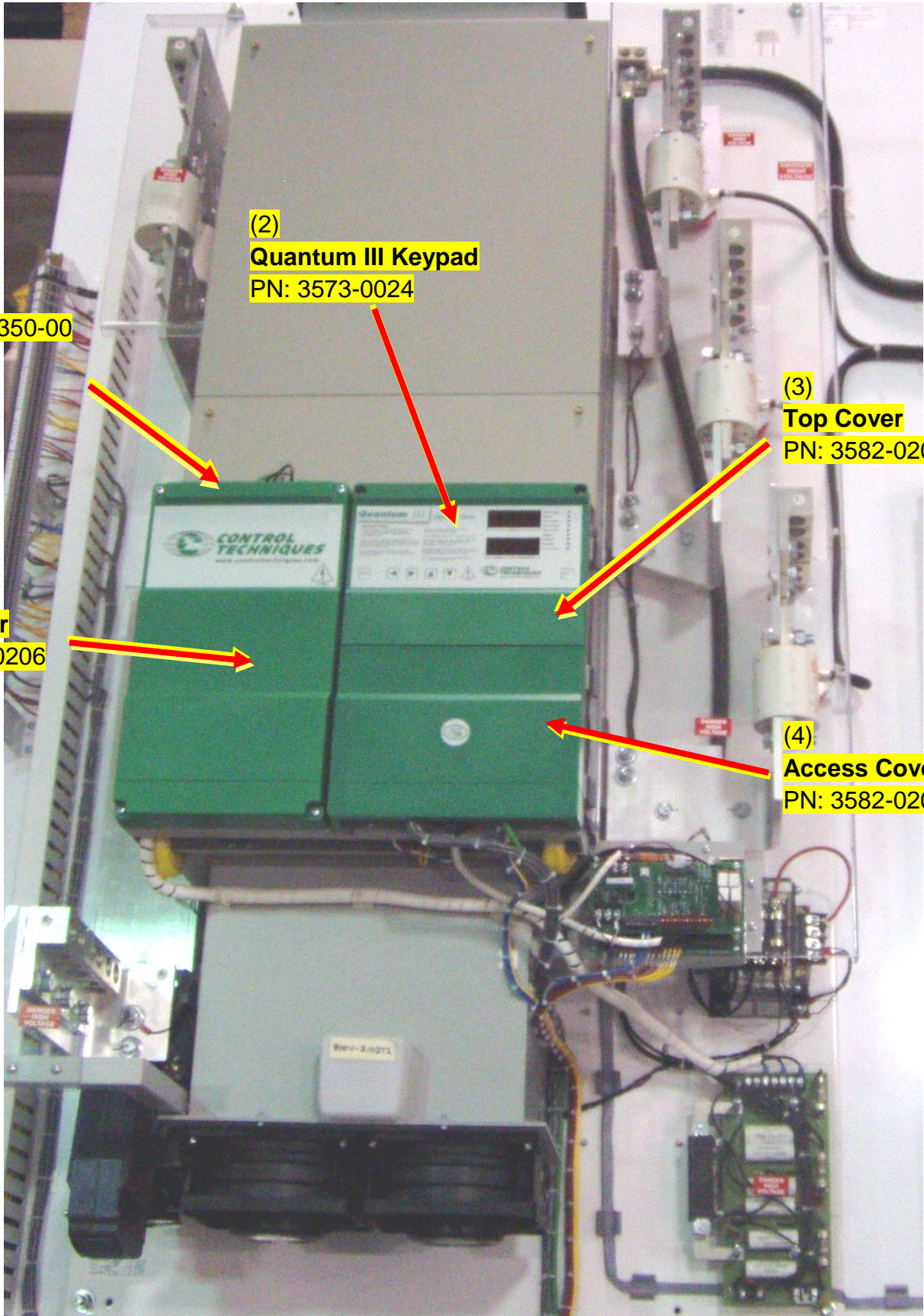
(1)
Label
PN: 3617-1350-00

(2)
Quantum III Keypad
PN: 3573-0024

(3)
Top Cover
PN: 3582-0201-00

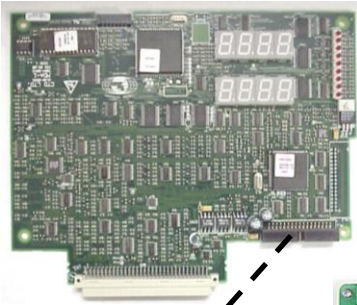
(5)
Side Cover
PN: 3581-0206

(4)
Access Cover
PN: 3582-0202-00

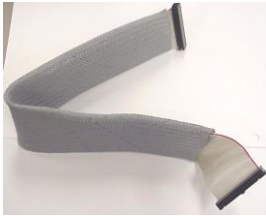


TOP SECTION

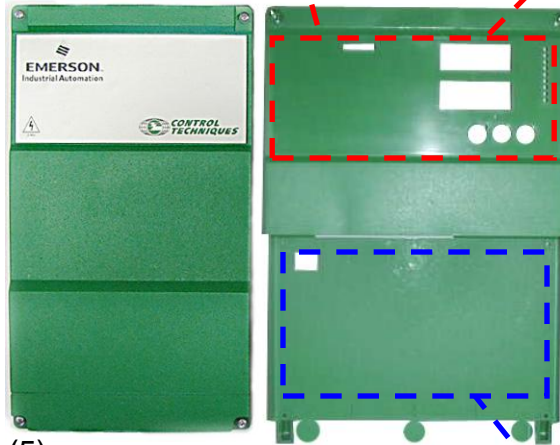
(6)
MDA1 CPU
 PN: 9200-0784



(2)
QIII Keypad
 PN: 3573-0024

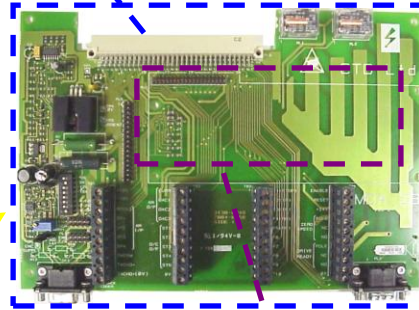


(7)
Ribbon Cable
 PN: 3471-0207-06



(3)
Top Cover
 PN: 3582-0201-00
 CTRI 247

(5)
Side Cover &
 PN: 3581-0206
 (1)
Label
 PN: 3617-1350-00



(8)
MDA2B*
 PN: 9200-0782

* There are variations to this board that might need to be discussed with a technician (examples MDA 2, and MDA2B).

(9)
MD29**
Repair Only
 PN: 9200-0896



No Availability

** There are variations to this board that might need to be discussed with a technician (examples MD29AN, and custom program variations-see paper label on large IC)

(4)
Access Cover
 PN: 3582-0202-00



POWER SECTION



(10)
Power Board Fuses (3)
PN: 3707-602000

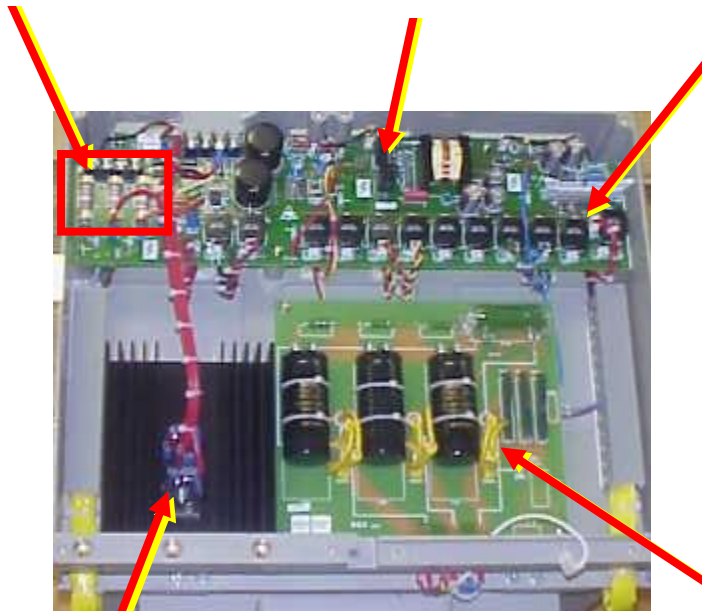


(11)
Power Board MDA 6 480V
PN: 9200-0735

(12)
Power Board MDA 6 660V
PN: 9200-0736



(13)
Thermistor
PN: 1310-0488-03



(15)
Field Bridge Rectifiers (2)
PN: 2425-4516



(14)
Snubber board SS4
PN: 9290-0008

Fans

(16)
Fans
115VAC Fan
PN: 3900-003



SCRs

(17)
480VAC units
PN: 2436-7243



(18)
660VAC units
PN: 2436-7204

Mentor II Non-Regenerative uses 6 SCRs. Regenerative units will use 12 SCRs.



Non-regen heatsink

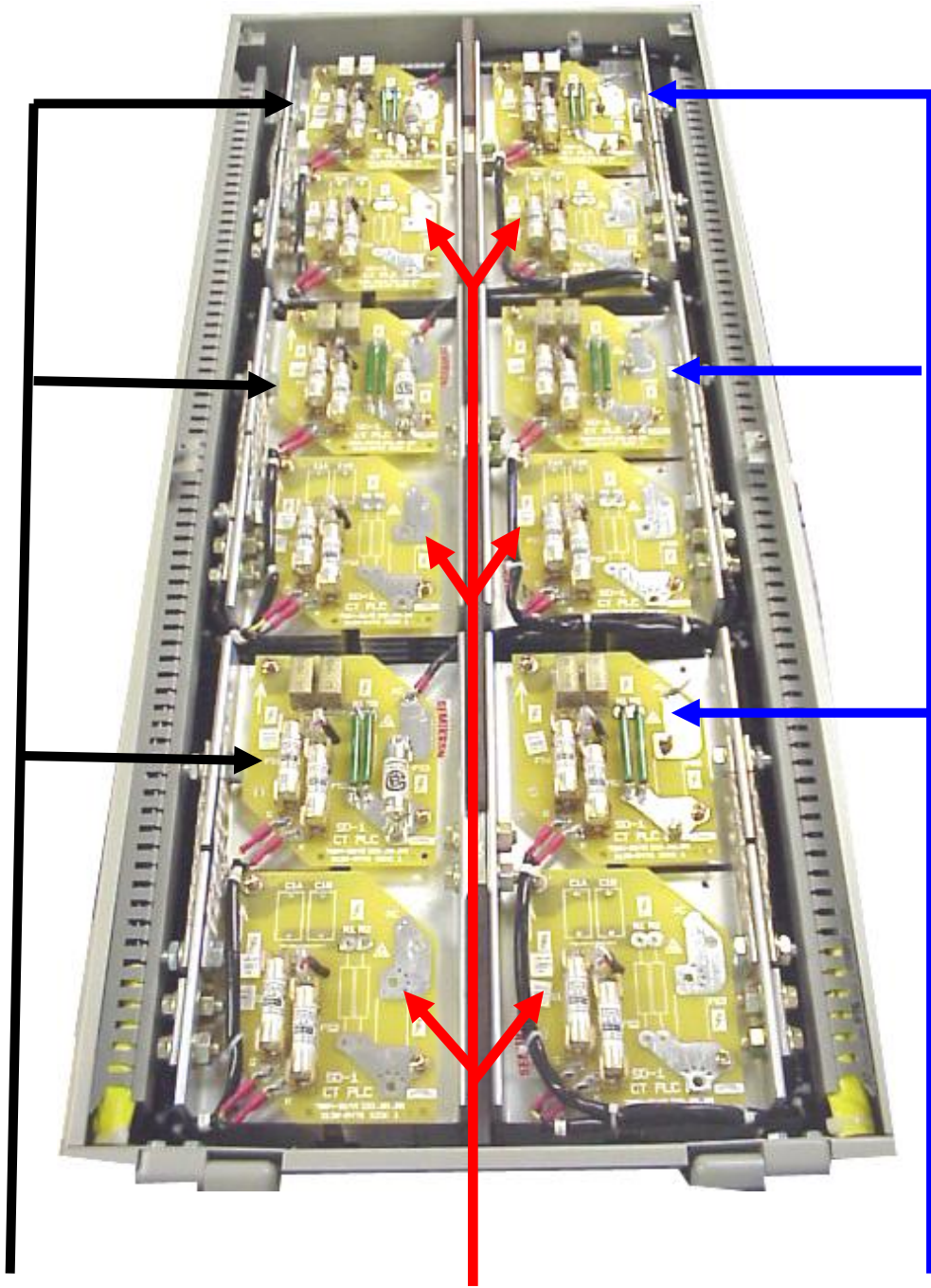
(19)
480VAC P/N: 2438-3238
(20)
660VAC P/N: 2438-3240



Regen heatsink

(21)
480VAC P/N: 2438-3235
(22)
660VAC P/N: 2438-3241

Regen Drive's SD1 Board Layouts.



(23)
SD1 Board
PN: 9290-0060

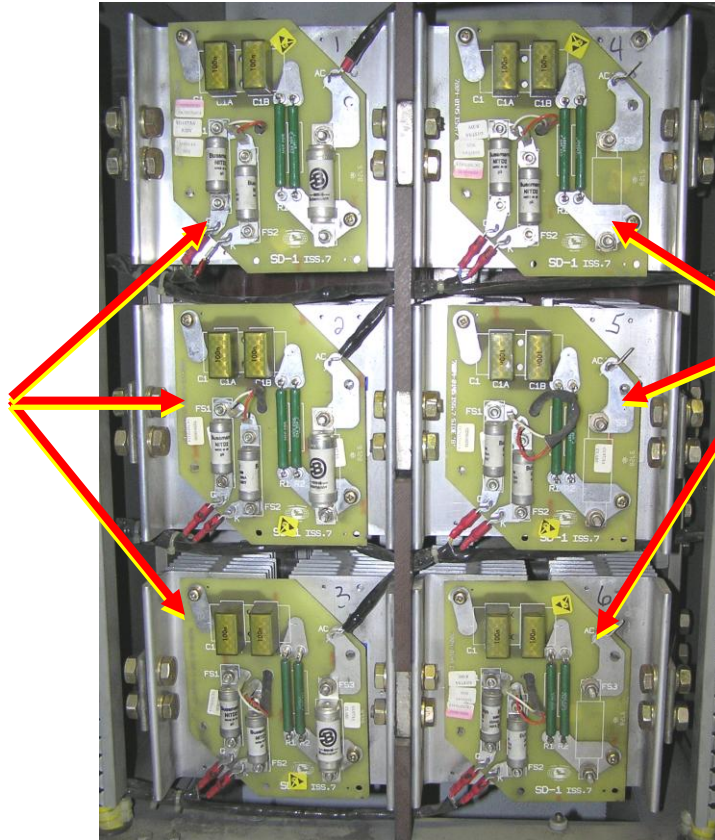
(24)
SD1 Board
PN: 9291-0060

(25)
SD1 Board
PN: 9292-0060

Non-Regen SD1 Board Layouts

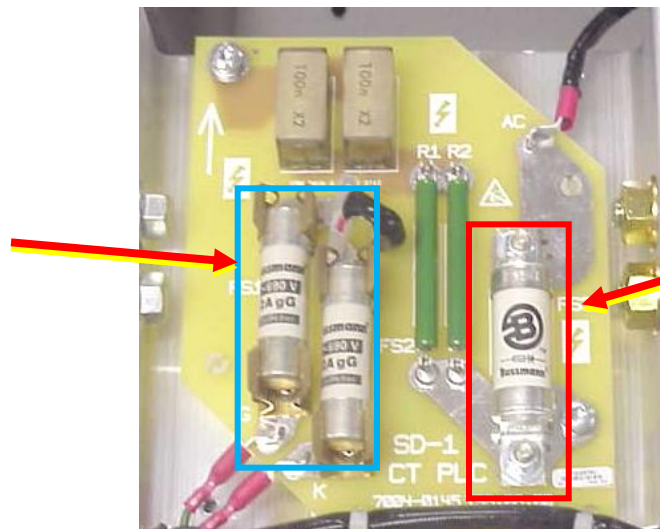
Pictured to the right is a **Non-Regen unit**. In the Non-Regen drives you see that this unit has two different SD1 Boards. The three SD1 boards on the **left** had side are **9290-0060** and the three on the **right** had side are **9292-0060**.

(23)
SD1 Board
PN: 9290-0060



(25)
SD1 Board
PN: 9292-0060

(26)
SD1 FS1 & FS2
PN: 3537-3253



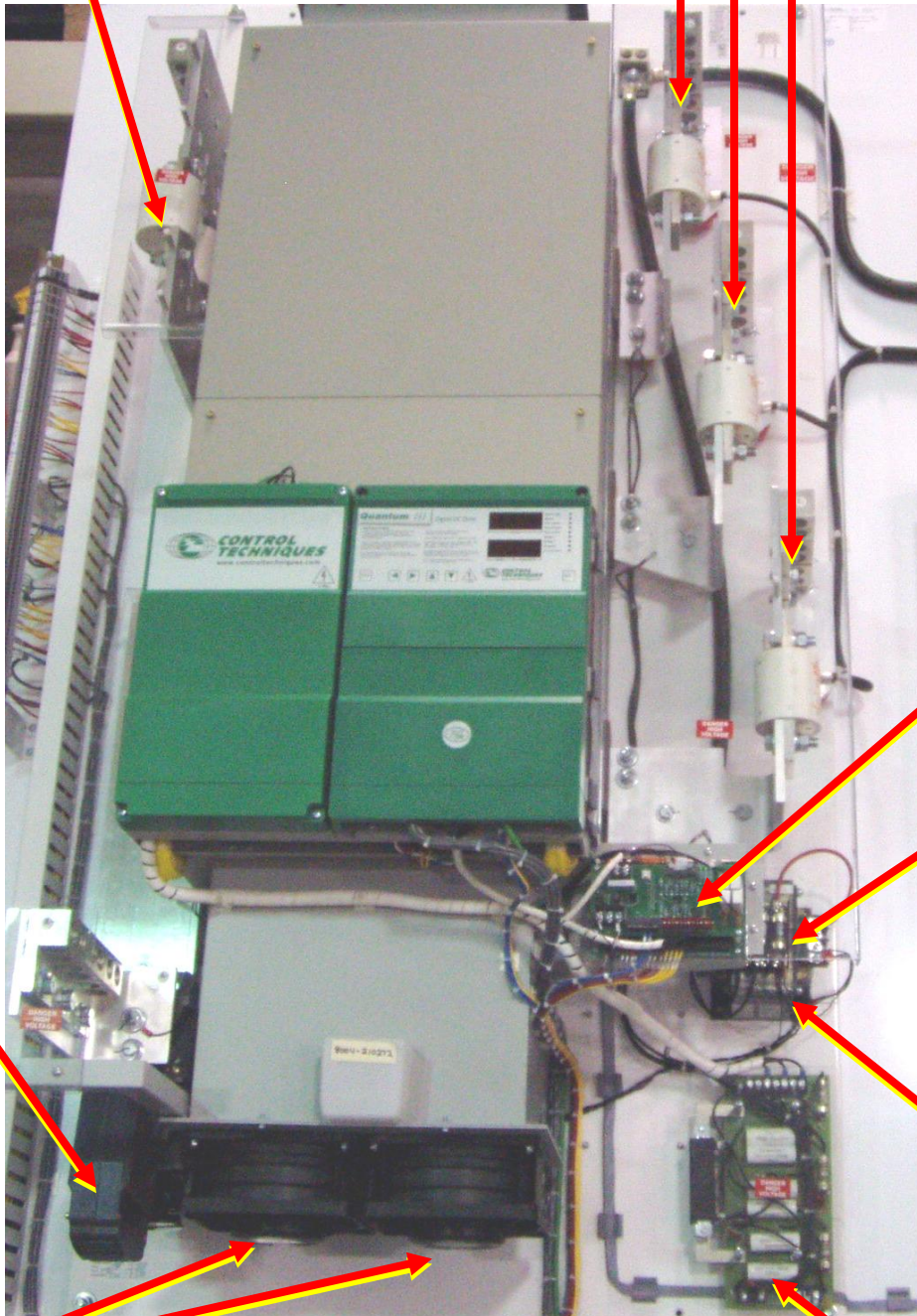
(27)
SD1 FS3
PN: 4347-0030

Armature Fuses	Drive
3701-712001	9500-8615
3701-714001	9500-8616
3701-780000	9500-8617
3701-790000	9500-8618
3701-790000	9500-8619
3701-712001	9500-8620

Line Fuses	Drive
3701-510001	9500-8615
3701-512001	9500-8616
3701-514001	9500-8617
3701-516001	9500-8618
3701-590000	9500-8619
3701-510001	9500-8620

(28)
Armature Fuse

(29)
Line Fuse



(34)
Arm. Contactors
PN: 3850-1004

(30)
Tach Board
PN: 9500-4030
(Top Board)

(31)
Relay Board
PN: 9500-4025
(Bottom Board)

(32)
Transformer
PN: 3572-0250-P13-20
(33)
Transformer Fuses
See Chart on Next Page

(16)
Fans
PN: 3900-003

(35)
Suppressor Board
PN: 9500-4047

See the next couple pages to place a quote order.

Item Number *	Part Number	Part Description	Quantity
1	3617-1350-00	Label	
2	3573-0024	Quantum III Keypad	
3	3582-0201-00	Top Cover	
4	3582-0202-00	Access Cover	
5	3581-0206	Side Cover	
6	9200-0784	MDA1 CPU	
7	3471-0207-06	Ribbon Cable	
8	9200-0782	MDA2B	
9	9200-0896	MD29 No Availability – Repair Only	
10	3707-602000	Power Board Fuses	
11	9200-0735	Power Board MDA 6 480V	
12	9200-0736	Power Board MDA 6 660V	
13	1310-0488-03	Thermistor	
14	9290-0008	Snubber Board SS4	
15	2425-4516	Field Bridge Rectifiers	
16	3900-003	Fans 115VAC Fan	
17	2436-7243	SCRs for 480VAC units	
18	2436-7204	SCRs for 660VAC units	
19	2438-3238	Non-Regen Heatsink 480Vac	
20	2438-3240	Non-Regen Heatsink 660Vac	
21	2438-3235	Regen Heatsink 480Vac	
22	2438-3241	Regen Heatsink 660Vac	
23	9290-0060	SD1 Board w/Fuses 1, 2, 3	
24	9291-0060	SD1 Board w/FS 1 & 2 no snubber	
25	9292-0060	SD1 Board w/Fuses 1 & 2	
26	3537-3253	SD1 FS1 & FS2 Fuses	
27	4347-0030	SD1 FS3 Fuse	
28		Armature Fuses	
28	3701-712001	9500-8615	
28	3701-714001	9500-8616	
28	3701-780000	9500-8617	
28	3701-790000	9500-8618	
28	3701-790000	9500-8619	
28	3701-712001	9500-8620	
29		Line Fuses	
29	3701-510001	9500-8615	
29	3701-512001	9500-8616	
29	3701-514001	9500-8617	
29	3701-516001	9500-8618	
29	3701-590000	9500-8619	
29	3701-510001	9500-8620	
30	9500-4030	Tach Board	
31	9500-4025	Relay Board	
32	3572-0500-P20-26	Transformer	
33	3708-500300	Transformer Fuse (2)	
33	3708-500620	Transformer Fuse (1)	
34	3850-1004	Armature Contactors	

Call us Toll Free 1-800-367-8067 and ask for Replacement Parts

or **FAX** using the forms above and below to **716-774-8327**

Request for Quote Order Form

Quantum III Size 3

Please print your information below

Name	
Company	
Street address	
City	
State/Province	
Zip/postal code	
Phone number	
Fax Number	
E-mail address	

Call us Toll Free **1-800-367-8067** and ask for Replacement Parts

or **FAX** using the forms above to **716-774-8327**